



***Signalwands
Trafficbatons
Warningsticks ...***

Evolution ...



Since 60 years one of the main manufacturer and supplier of signalwands and trafficbatons.

Special experience, consistent development, selected materials, modern production techniques and an efficient quality management for high-quality signalwands and warningsticks.

GLUNZ-Trafficbatons are made of high-quality, tough and impact-resistant plastic. Sturdy signal plates with 5.5mm material thickness for extra strength. On both sides high-quality reflective films with large illuminated letterings. Flat reflectors with colored screw caps for long-range signals. Protected switcher and ergonomic handles.

Continuous development and implementation of regulatory requirements for a perfect personal safety.

We developed innovative LED technologies for bright illumination, best handling, long range and highest safety. As a manufacturer, we are able to modify and produce the items as desired according to your demand.

An extensive portfolio of articles is produced at the production site Recklinghausen in Germany and delivered worldwide.

60 years...

- development and production
- experience and knowledge
- quality and precision
- team spirit and partnership
- competence and efficiency
- benefit and warranty
- performance and delivery
- tradition and innovation

With pressure switch ...

Signalwand 950 N

with pressure switch, illuminated on one side

protected pressure switch, impact resistant, window for function on the back, switch with tactile function.

Length / Plate Ø / Reflector Ø: 395 / 198 / 100 mm

Handlelength / Handle Ø: 158 / 34 mm

Batteries: 3 x 1.5 V Baby LR14/C

Bulb: E10, 3,6 – 4,5 V, 0,2 A

Weight: 360 g

No.: 6010

Signalwand 950 N-LED

with pressure switch, LED illuminated on one side

with high bright unique cone lense LED D1 (our recommendation)

No.: 6011

with innovative LED D5

No.: 6015

with powerful LED D9

No.: 6019

Signalwand 950 NK

short version, illuminated on one side

Length: 345 mm

Handlelength: 108 mm

Batteries: 2 x 1.5 V Baby LR14/C

Weight: 330 g

No.: 6040

Signalwand 950 NK-LED

short version, LED illuminated on one side

with high bright unique cone lense LED D1 (our recommendation)

No.: 6041

with innovative LED D5

No.: 6045



With toggle switch ...



Signalwand 930 N

with toggle switch, illuminated on one side

protected toggle switch, impact resistant, plate thickness 5.5 mm, long range illumination with standard bulb, leather loop, high-quality reflective films on both sides - colors and inscription on request, lightfilter in color as desired: red, green, yellow and clear.

Length / Plate Ø / Reflector Ø: 455 / 195 / 100 mm

Handlelength / Handle Ø: 158 / 34 mm

Batteries: 3 x 1.5 V Baby LR14/C

Bulb: E10, 3,6–4,5 V, 0,2 A

Weight: 390 g

No.: 5930

Signalwand 930 N-LED

with pressure switch, LED illuminated on one side

with high bright unique cone lense LED D1 (**our recommendation**)

No.: 5931

with innovative LED D5

No.: 5935

with powerful LED D9

No.: 5939

Signalwand 930 NK

short version, illuminated on one side

Length: 405 mm

Handlelength: 108 mm

Batteries: 2 x 1.5 V Baby LR14/C

Bulb: E10, 2,4–3,0 V, 0,2 A

Weight: 360 g

No.: 5950

Signalwand 930 NK-LED

short version, LED illuminated on one side

with high bright unique cone lense LED D1 (**our recommendation**)

No.: 5951

with innovative LED D5

No.: 5955

Signalwand 930 ND

with toggle switches, illuminated on both sides

protected toggle switches, impact resistant, plate thickness 5.5 mm, long range illumination with standard bulbs, leather belt, high-quality reflective films on both sides - colors and inscription on request, lightfilters in color as desired: red, green, yellow and clear.

Length / Plate Ø / Reflector Ø: 455 / 195 / 100 mm

Handlelength / Handle Ø: 158 / 34 mm

Batteries: 3 x 1.5 V Baby LR14/C

Bulb: E10, 3,6 – 4,5 V, 0,2 A

Weight: 480 g

No.: 5940

Signalwand 930 ND-LED

with pressure switch, LED illuminated on both sides

with high bright unique cone lense LED D1 (**our recommendation**)

No.: 5941

with innovative LED D5

No.: 5945

with powerful LED D9

No.: 5949

Signalwand 930 NDK

short version, illuminated on both sides

Length: 405 mm

Handlelength: 108 mm

Batteries: 2 x 1.5 V Baby LR14/C

Bulb: E10, 2,4 – 3,0 V, 0,2 A

Weight: 450 g

No.: 5960

Signalwand 930 NDK-LED

short version, LED illuminated on both sides

with high bright unique cone lense LED D1 (**our recommendation**)

No.: 5961

with innovative LED D5

No.: 5965



With sliding switch ...



Signalwand 980 N

with sliding switch, illuminated on one side

Material and execution in the proven design but with real large, wide and handy sliding switch even for thick gloves.

Length / Plate Ø / Reflector Ø: 455 / 195 / 100 mm

Handlength / Handle Ø: 158 / 34 mm

Batteries: 3 x 1.5 V Baby LR14/C

Bulb: E10, 3,6 – 4,5 V, 0,2 A

Weight: 400 g

No.: 6050

Signalwand 980 N-LED

with pressure switch, LED illuminated on one side

with high bright unique cone lense LED D1 (**our recommendation**)

No.: 6051

with innovative LED D5

No.: 6055

with powerful LED D9

No.: 6059

Signalwand 980 NK

short version, illuminated on one side

Length: 405 mm

Handlength: 108 mm

Batteries: 2 x 1.5 V Baby LR14/C

Bulb: E10, 2,4 – 3,0 V, 0,2 A

Weight: 370 g

No.: 6060

Signalwand 980 NK-LED

short version, LED illuminated on one side

with high bright unique cone lense LED D1 (**our recommendation**)

No.: 6061

with innovative LED D5

No.: 6062

Signalwand 980 ND

with sliding switch, illuminated on one boths sides

Length / Plate Ø / Reflector Ø: 455 / 195 / 100 mm

Handlelength / Handle Ø: 158 / 34 mm

Batteries: 3 x 1.5 V Baby LR14/C

Bulb: E10, 3,6 – 4,5 V, 0,2 A

Weight: 490 g

No.: 6055

Signalwand 980 ND-LED

with pressure switch, LED illuminated on boths sides

with high bright unique cone lense LED D1 (our recommendation)

No.: 6056

with innovative LED D5

No.: 6057

with powerful LED D9

No.: 6058

Signalwand 980 NDK

short version, illuminated on boths sides

Length: 405 mm

Handlelength: 108 mm

Batteries: 2 x 1.5 V Baby LR14/C

Bulb: E10, 2,4 – 3,0 V, 0,2 A

Weight: 460 g

No.: 6065

Signalwand 980 NDK-LED

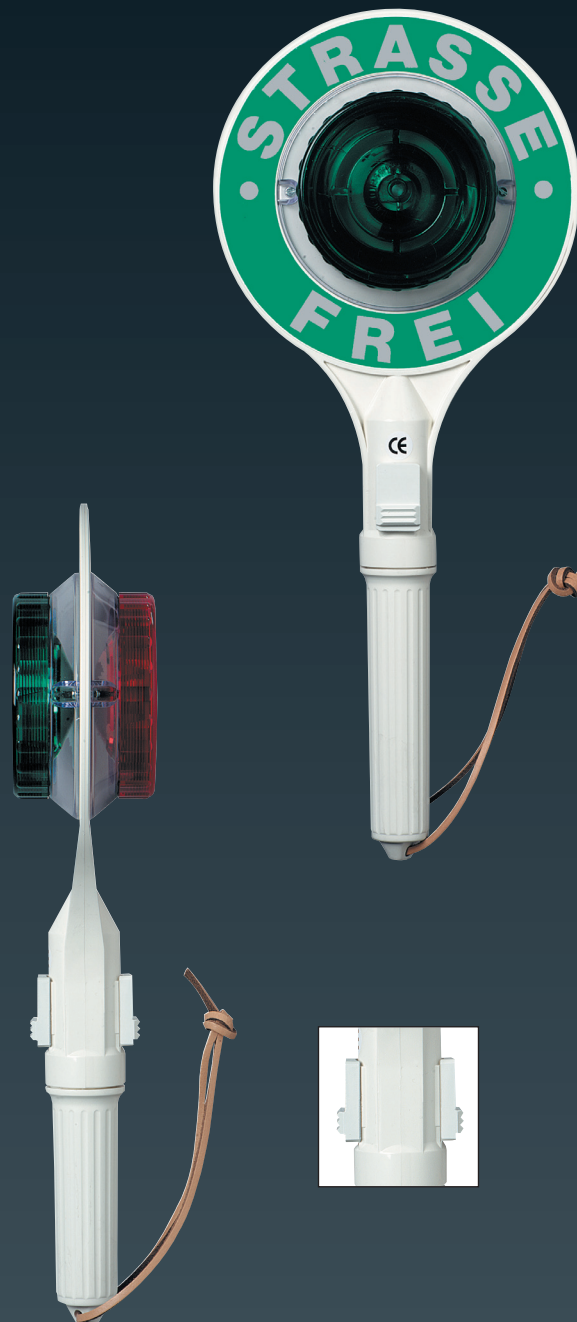
short version, LED illuminated on boths sides

with high bright unique cone lense LED D1 (our recommendation)

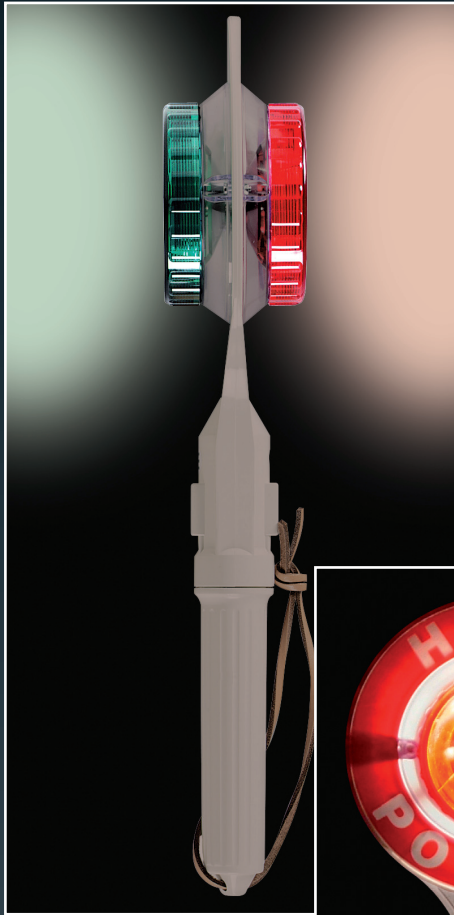
No.: 6066

with innovative LED D5

No.: 6067



Lights ...



Glunz Lichttechnik

Different lightversions for GLUNZ trafficbatons. All lighting units are equipped with socket E10 and can be used optionally.

Bulb 3,5 – 4,5 V

for signalwands with 3 batteries

No.: 9521-35

Bulb 2,4 – 3,0 V

for signalwands with 2 batteries

No.: 9521-25

Kryptonbulb 3,5 – 4,5 V

very bright light

for signalwands with 3 batteries

No.: 9521-50

Kryptonbulb 2,4 – 3,0 V

for signalwands with 2 batteries

No.: 9521-40



Lighting unit D1 (our recommendation)

360° high-power LED, very strong and bright, using the reflector for long range signals, as it were for red and green caps, with unique cone lense intensive illumination of imprints.

Lighting unit D1 3,6 – 4,5 V

for signalwands with 3 batteries

No.: 9522

Lighting unit D1 2,4 – 3,0 V

for signalwands with 2 batteries

No.: 9523

GLUNZ LED Technology

Newly developed LED units for highest visibility and longest range. Special safety advantage, low power consumption, long life and shock resistant.

Lighting unit D5

Innovative unit with 5 LEDs, for a balanced and well visible signal, universal use for all colours and all trafficbatons.

Lighting unit D5 3,6 - 4,5 V

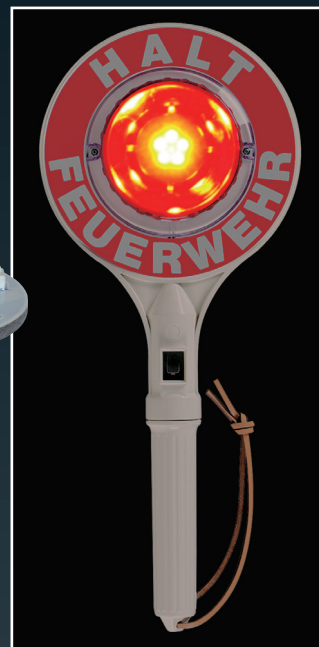
for signalwands with 3 batteries

No.: 9522-50

Lighting unit D5 2,4 - 3,0 V

for signalwands with 2 batteries

No.: 9523-50



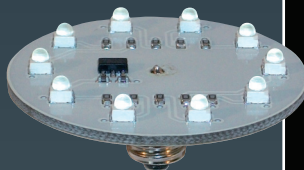
Lighting unit D9

Powerfull unit with 9 LEDs, for an intense and highly visible long range signal, universal use for all colors and all trafficbatons.

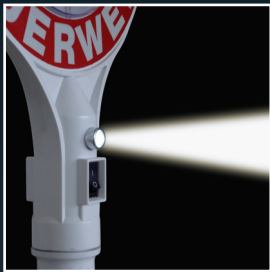
Lighting unit D9 3,6 - 4,5 V

for signalwands with 3 batteries

No.: 9522-90



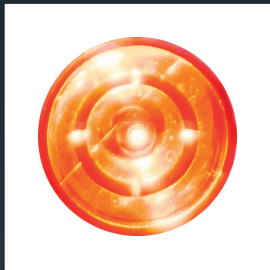
Additional equipment and accessories ...



Spotlight

for GLUNZ traffic batons 930N. Intense spot to read documents.

No.: 6975



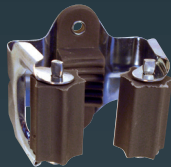
Flashing-Circuit

for GLUNZ traffic batons 930. Combined permanent and blinking mode.

No.: 6970

On request we deliver replacement bulbs within the reflector.

No.: 6969



Clamping Bracket

to screw on, for universal and save storage.

Size:

Space holes:

No.: 6965

50 x 50 x 50 mm
35 mm

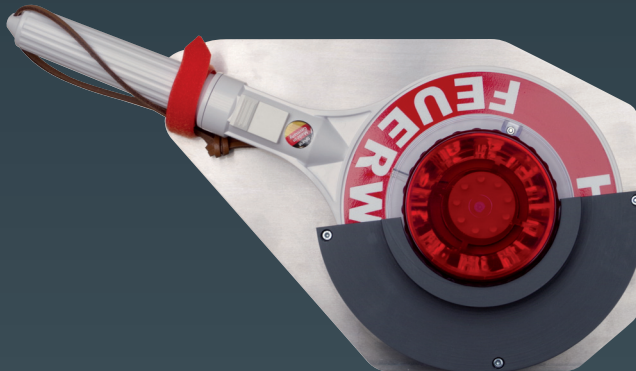
Car Case

to screw on, for very save transport and real fast taking out. Possible to change the use for left and right hand.

Size:

No.: 6966

340 x 235 x 70 mm



Battery Baby LR14/C
suitable for all signalwands

No.: 9547

Rechargeable Handle

with integrated powerfull rechargeable cells. Usefull for all GLUNZ Signalwands.

Rechargeable Handle 900 G

with 3 cells

Power: 3,6 V
Operating time: app. 40 h
Charging time: app. 6 h
Weight: 295 g

No.: 6961

Rechargeable Handle 900 GK

short version with 2 cells

Power : 2,4 V
Operating time: app. 30 h
Charging time: app. 4 h
Weight: 225 g

No.: 6962



Charger for Rechargeable Handle

electronically controlled charging system with fast-charging and sustaining-charge. Delivery including adaptor for 900G/GK.

Plug Charger 230 V
with cable and adaptor
No.: 6960

Car Charger 12/24 V
for car power points
No.: 6959



The Concept ...



Our concept

All GLUNZ Signalwands have standard dimensions, are compatible and consist of two components:

- Trafficbatonplate
- Trafficbatonhandle

The customer can choose:

- Toggle Switch
- Pressure Switch
- Sliding Switch
- One side illumination
- Double side illumination
- Long handle, 3 batteries
- Short handle, 2 batteries
- Bulb
- Crypton-bulb
- Various LEDs
- Permanent light or blinking mode
- Replacement bulb in reflector
- Filter cap for light color red/green/yellow
- Filter cap transparent
- Color of reflecting films red/green/blue/white or other
- Inscriptions/Imprints as desired

Safety Note

Signalwands and trafficbatons must be used as intended by authorized persons. Not for use in potentially explosive atmospheres. Follow our instructions and manuals for a safe and correct use.

Spareparts

The supply of spare parts is of utmost importance to us. Fast delivery of spare parts is a basic requirement for a functioning service concept.

Imprints/Inscriptions

Our reflecting films for signalwands are red, green, blue, white or each other color as desired. We print inscriptions, imprints, signs and fonts according to customer requirements.

Please request our current list with film labels. For example:

- red, neutral
- HALT
- HALT STOP
- HALT FEUERWEHR
- HALT POLIZEI
- HALT POLIZEIBEHÖRDE
- HALT BAHNPOLIZEI
- HALT BUNDESWEHR
- HALT KINDER
- HALT JUSTIZ
- HALT DLRG
- HALT THW
- HALT ORDNUNGSAMT
- HALT ZOLL
- HALT SECURITY
- HALT SICHERHEITSDIENST
- HALT WERKSCHUTZ
- HALT VERKEHRSAUFSICHT
- HALT VERKEHRSWACHT
- HALT ZIVILSCHUTZ
- EINSATZ FEUERWEHR
- KONTROLLE BAG
- MILICIJA
- STOP
- STOP SECURITY
- STOP POLICE
- STOP POLICIJA
- STOP POLITIE
- green, neutral
- STRASSE FREI
- WEITER FAHREN
- GO
- GO POLICE
- MILICIJA
- SECURITY FORCES

Many other standard imprints are on stock.



Trafficbatons and Warningsticks ...



Trafficbaton 910 T **without illumination**

signal board with sturdy plate, strong handle made of ash wood in yellow signal color and leather loop. Reflecting films on both sides - imprints and colors as desired.

Length / Plate Ø: 450 mm / 195 mm

Handlength / Handle Ø: 250 mm / 24 mm

Weight: 250 g

No.: 5910

Trafficbaton 910 TK **short version, without illumination**

Length: 380 mm

Handlength: 180 mm

Weight: 220 g

No.: 5911

Trafficbaton 920 T **without illumination, made entirely of plastic**

Length / Plate Ø: 455 mm / 195 mm

Handlength / Handle Ø: 158 mm / 34 mm

Weight: 260 g

No.: 5900

Trafficbaton 920 TK **short version, without illumination, made entirely of plastic**

Length: 405 mm

Handlength: 108 mm

Weight: 230 g

No.: 5901

Warning-Stick

Battery powered signal bar with very bright LED flash light.
Lightweight, robust, with pressure switch and loop.

Color: fluorescent red

Length: 520 mm

Ø: 52 mm

Batteries: 2 x 1,5 V Mono LR20/B

Weight: 170 g

No.: 5851

Torch

with particularly bright krypton light, yellow signal cone, selectable light intensities, flashing function, continuous light and battery monitoring.

Batteries: 3 x Mono/R20

Weight: 150 g

No.: 5855





Glunz Technik GmbH
Factory for Signals
Zum Wetterschacht 2-4
D-45659 Recklinghausen

+49 23 61/5 76 74-76

+49 23 61/18 31 07

post@glunz-technik.de

www.glunz-technik.de